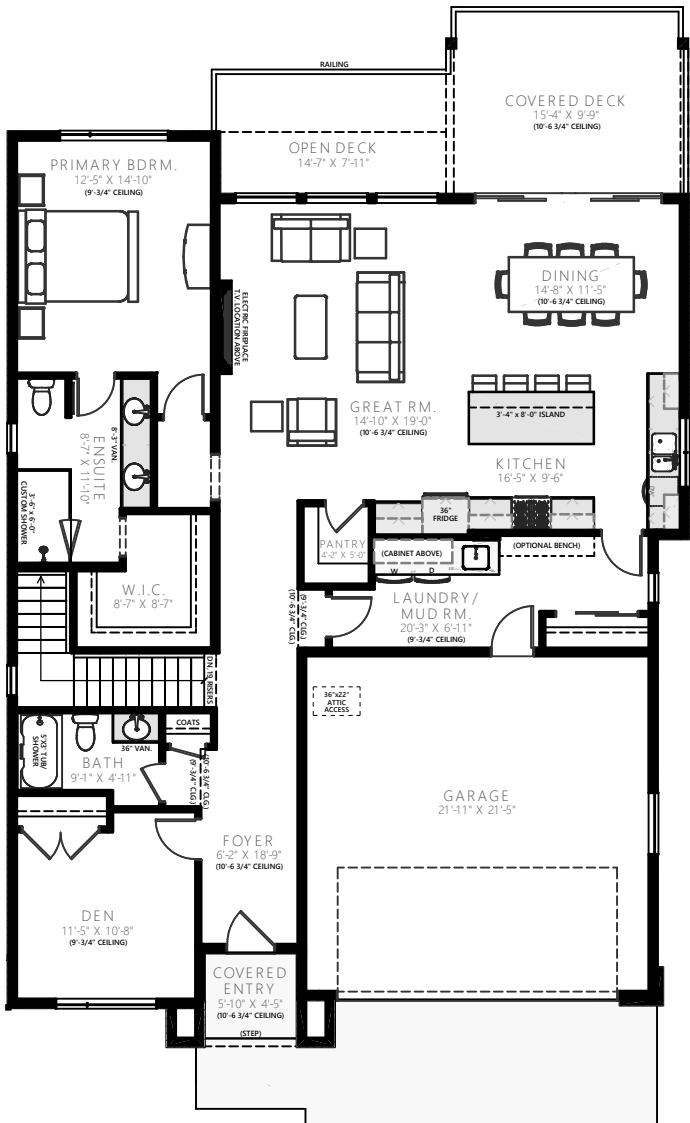




The Trails
MODERN HILLSIDE LIVING

THE KALALAU

THE TRAILS LIVING.CA



MAIN FLOOR



SECOND FLOOR



TOTAL SQUARE FOOTAGE
3,761 SQ. FT.

MAIN FLOOR

1,707 SQ. FT.
GARAGE: 516 SQ. FT.

BASEMENT

FINISHED AREA: 1,538 SQ.FT.
(NOT INCLUDING MECH OR STAIRS)

All square footage and room sizes are approximate and may not be exactly as shown. The developer and builder reserve the right to make modifications deemed necessary in order to maintain the high standards of the development and meet all applicable codes. Rooms may vary slightly from the preliminary plans to the final survey. E&OE.